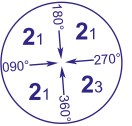
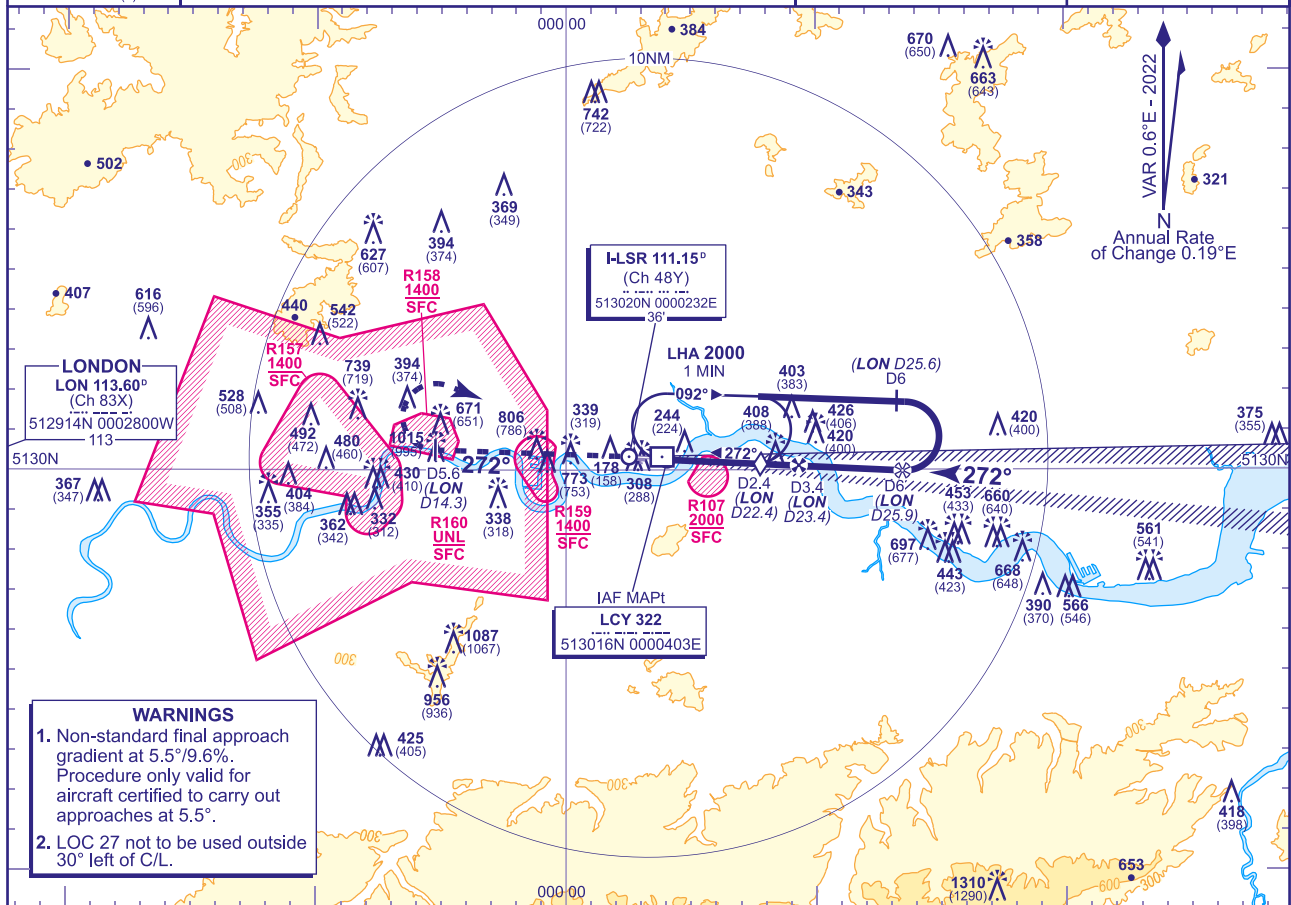


## INSTRUMENT APPROACH CHART - ICAO

LONDON CITY  
LOC/DME/NDB(L)  
RWY 27  
(ACFT CAT A,B,C)

	APP 132.700	THAMES DIRECTOR	AD ELEVATION 20	TRANSITION ALTITUDE <b>6000</b>
	TWR 118.080, 129.455	CITY TOWER	THR ELEVATION 20	
	RAD 133.455, 128.025	THAMES DIRECTOR	OBSTACLE ELEVATION <b>1310 AMSL</b> (1290) (ABOVE THR)	
	ATIS 136.355	CITY INFORMATION	BEARINGS ARE MAGNETIC	



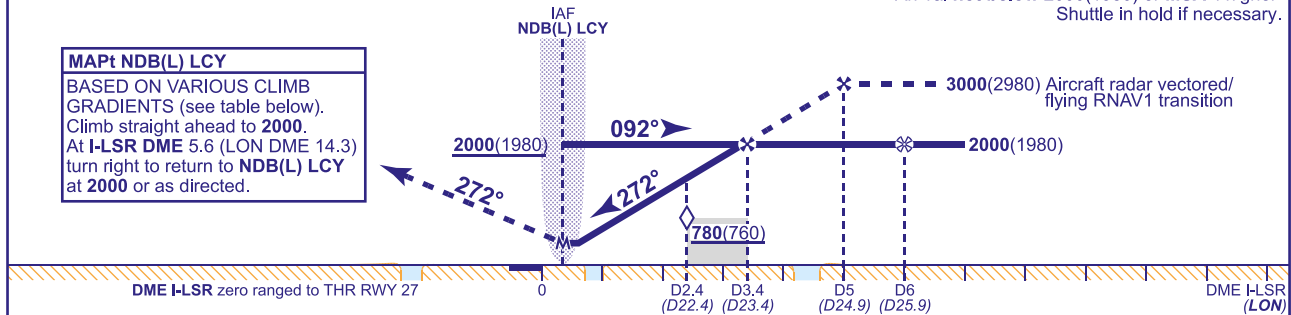
## RECOMMENDED PROFILE Gradient 9.6%, 585FT/NM

DME I-LSR(LON)	3.4(23.4)	3.0(23.0)	2.4 (SDF) (22.4)	2.0(22.0)	1.0(21.0)
ALT(HGT)	2000(1980)	1820(1800)	1460(1440)	1230(1210)	650(630)

Arrival **not below 2000(1980)** or **MSA** if higher.  
Shuttle in hold if necessary.

## MAPt NDB(L) LCY

BASED ON VARIOUS CLIMB GRADIENTS (see table below).  
Climb straight ahead to **2000**.  
At **I-LSR DME 5.6 (LON DME 14.3)** turn right to return to **NDB(L) LCY** at **2000** or as directed.



Aircraft Category		A	B	C	Rate of descent	G/S KT	160	140	120	100	80
OCA (OCH)	CLIMB GRAD 2.5%	570(550)	600(580)	630(610)		FT/MIN	1560	1365	1170	975	780
	CLIMB GRAD 4.0%	500(480)	520(500)	540(520)							
VM(C)OCA (OCH AAL)	NOT APPLICABLE										

## RADAR VECTORED/RNAV1 TRANSITION

Aircraft will normally be radar vectored/positioned to the LOC by Thames Director to be established on the LOC no later than I-LSR DME 6.

CHANGE (10/23): STEP DOWN FIX. CLIMB GRADIENT. SDF/MOCA ADDED.

AERO INFO DATE 01 AUG 23

AD 2-EGLC-8-5